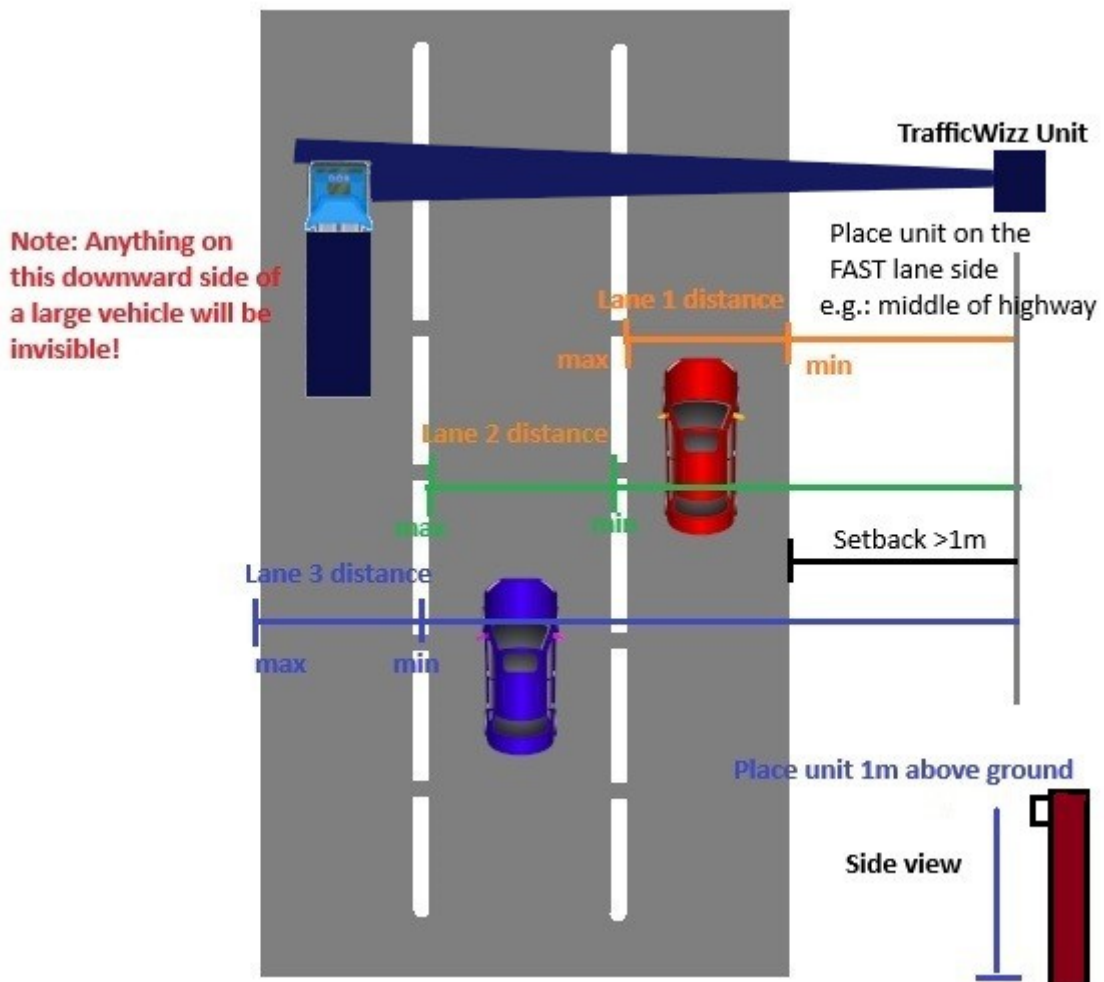


TrafficWizz Single Sensor Setup

The setup is fairly simple. Here are some requirements:

- The unit can be setup on its own or combined with one of our other products.
- In single sensor mode, set the beam to look across the road at an approximate 90 degree angle.
- The unit needs a minimum height of 1 meter. Installing the unit too high above the ground could miss vehicles. Anywhere from 1m to 1.5m would be fine.
- The unit needs a setback distance from the road of at least 1m.
- Lane 1's distance is mandatory, lane 2 and 3 are optional.



Notes:

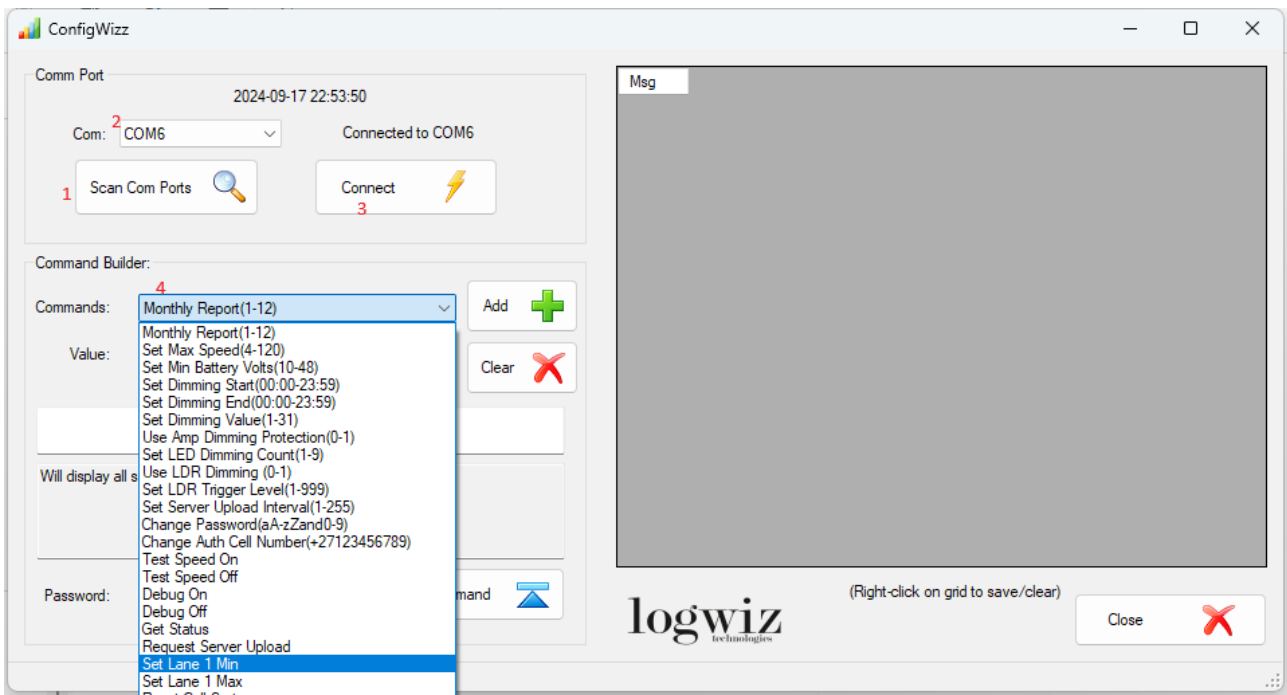
- Anything shadowed by larger vehicles will not be counted. (An overhead setup, or multiple sensors could solve this)
- Place the unit on the fast lane side in a multi lane environment.
- Keep the sensor's lenses clean.
- Use our config. software to set lane distances.

Using ConfigWizz to Set Lane Limits

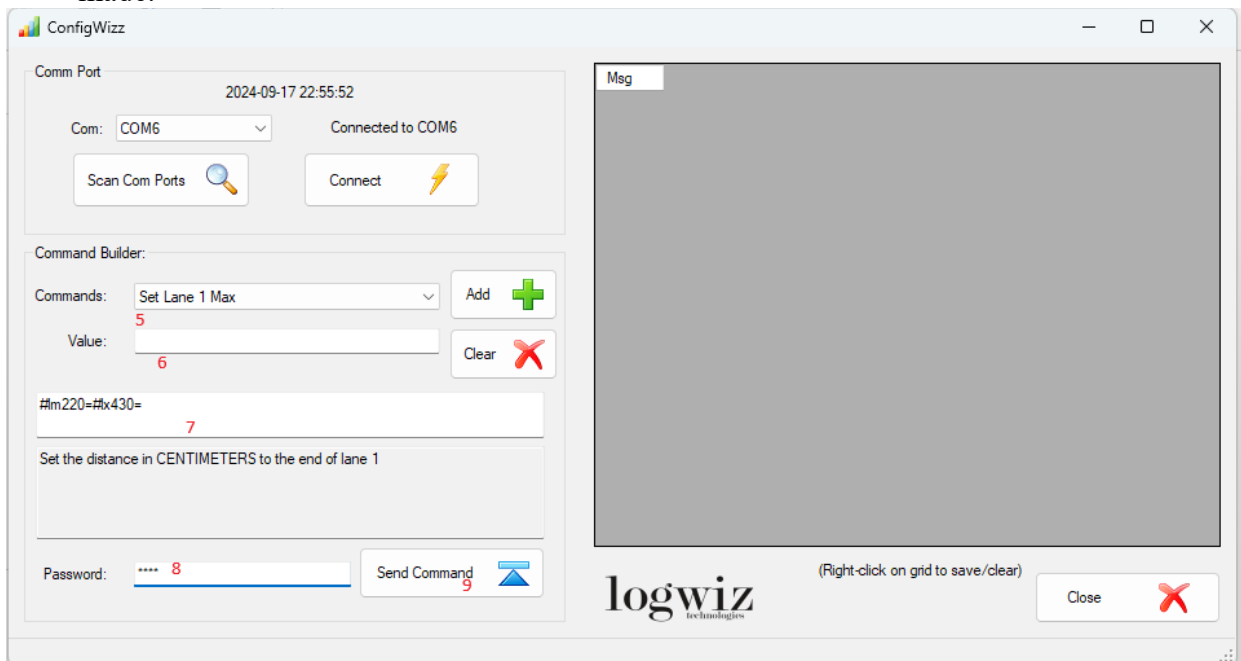
We have our own windows application to configure our devices. It is available on our website.

ConfigWizz is simple and totally generic.

Follow these steps to set the lane limits. (The numbers below correspond to the numbers on the images.)







1. After launching the ConfigWizz app, plug in your USB cable and press on SCAN COM PORTS button
2. Choose the COM port from the drop down.
3. Press Connect. A message will appear on the right pane when a successful connection is made.



4. Choose your command from the drop down. In this example, "Set Lane 1 Min".
5. In the value box, enter the distance to the beginning of lane 1. (Note in Centimeters!)
6. Press the green ADD button.
7. You will notice the command appear in the text box below the button. Note: You can send multiple commands in one line. In this example we are setting the min and max distances.
8. Enter your password. Default is 1234.
9. Press send command. The message box on the right will display the result.

Long Vehicles

Very long articulated trucks could be counted as two vehicles. Herewith a description:

<p>This will be counted as one vehicle</p> 	<p>Box truck Maximum length: 12.00 m Maximum width: 2.55 m</p>
<p>This will be counted as one vehicle if speed > 30kmh</p> 	<p>Tractor with semitrailer The semitrailer does not have its own front axle but its weight is supported by the tractor Maximum length: 16.50 m Maximum width: 2.55 m</p>
<p>This will be counted as two vehicles if speed < 60kmh</p> 	<p>Truck with centre axle trailer Maximum length: 18.75 m Maximum width: 2.55 m</p>
<p>This will be counted as two vehicles</p> 	<p>Longer and Heavier Truck combination (LHT) Maximum length: 25.25 m Maximum width: 2.55 m</p>

Tailgating Vehicles

Two vehicles less than 0.5 seconds apart in the same lane will be counted as one.



Vehicle Types

You could discriminate between cars and trucks or buses by their heights. This would need a two sensor installation. The 1.2m height would read cars and the 2.5m height would read the trucks/tall vehicles:

